

Weyn-Lauwers N.V.

Industriepark-Noord 12
B - 9100 SINT-NIKLAAS

Tel. : 00 32 (0)3 776.34.13
Fax : 00 32 (0)3 778.09.52
weynlauwers@weynlauwers.be
www.weynlauwers.be

BALL CHECK VALVE BSP - SS316 fig 774

DESIGN FEATURES

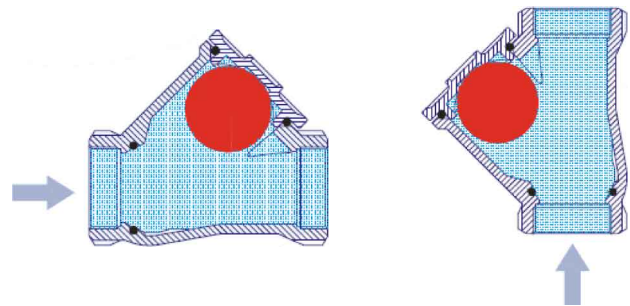
- ball check valve 1 1/4" - 1 1/2" - 2" PN16
- threaded BSP
- min. temp : -10°C
- max. temp : +90°C
- specifications : ball type
welded joints made with TIG method
removable bonnet

USE

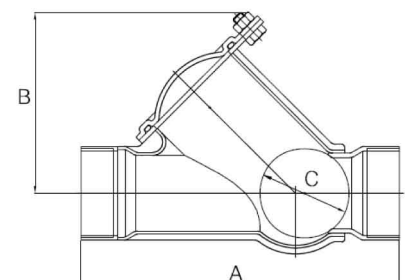
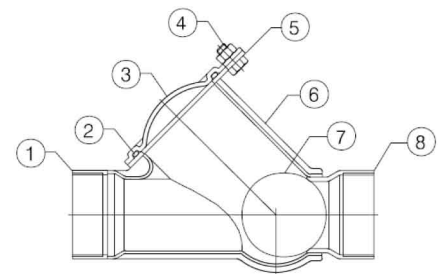
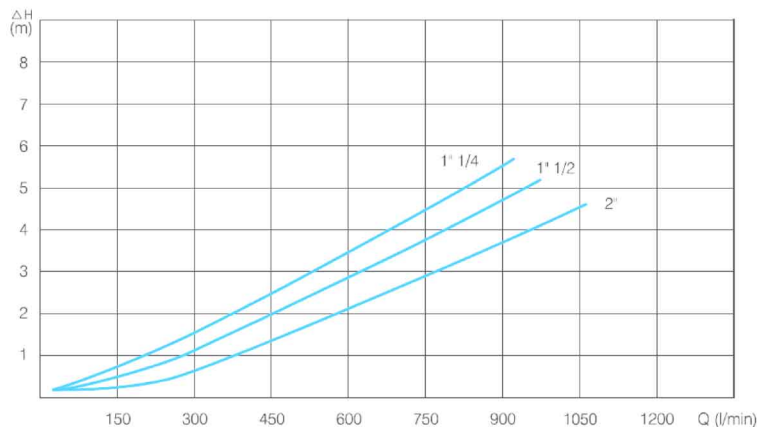
- water distribution and watering
- max. pressure : 16 bar

MATERIALS

item	Part name	Material
1	outlet end	1.4401 (AISI316)
2	gasket	NBR
3	cap	1.4401 (AISI316)
4	nut	SS316
5	bolt	SS316
6	body	1.4401 (AISI316)
7	ball	aluminium + NBR
8	inlet end	1.4401 (AISI316)



(H₂O - 15 °C Flujo Horizontal / Horizontal flow).



SIZE (in mm)

DN	1 1/4"	1 1/2"	2"
A	175	190	210
B	99	99	112
C	50	50	60
kg	1,10	1,18	1,61
ref.	207172	207173	207174